

*Chapter 1*

# Standard views for examination of the fetus

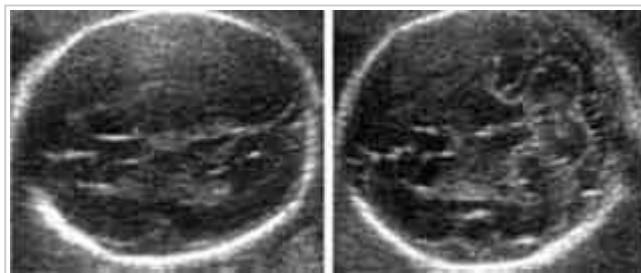
---

**Skull**

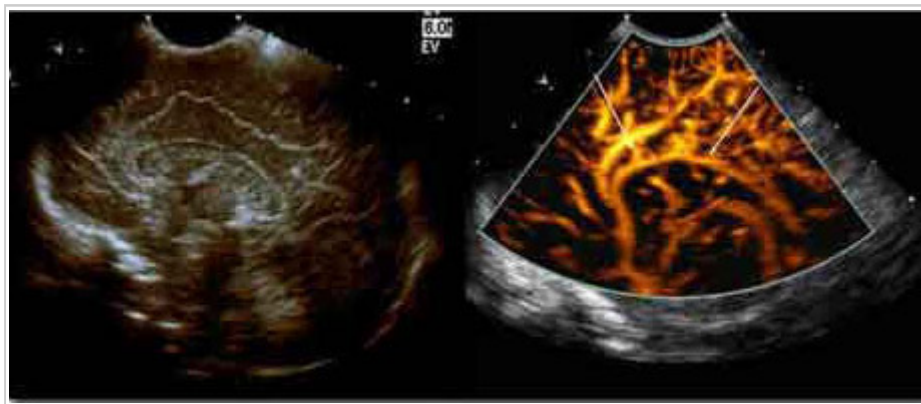
Examination of integrity and normal shape, and measurement of biparietal diameter and head circumference.

**Brain**

Examination of cerebral ventricles, choroid plexuses, mid-brain, posterior fossa (cerebellum and cisterna magna), and measurement of the anterior and posterior horns of the lateral ventricles.



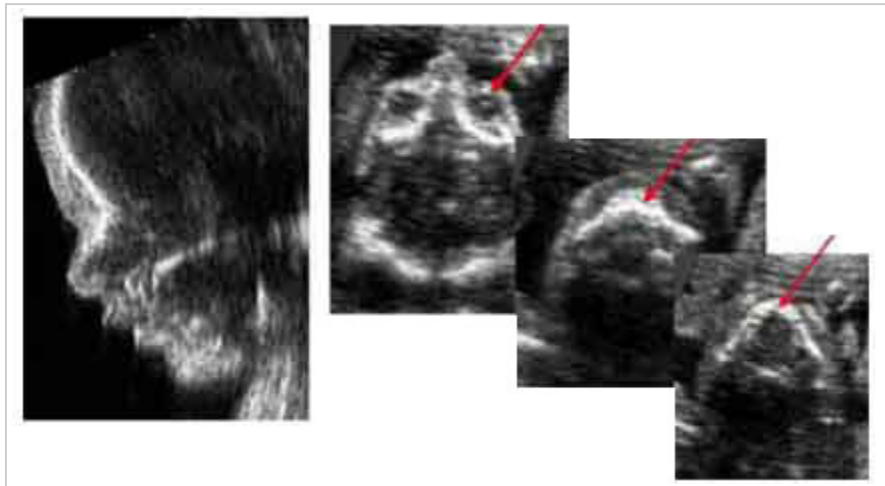
*BPD Plane - Transverse view (left). Transverse Cerebellar Diameter Plane - Transverse view (right)*



*Sagittal View (Transvaginal Scan): demonstrating transvaginal + color Doppler: pericallosal artery*

## Face

Examination of the profile, orbits and upper lip.

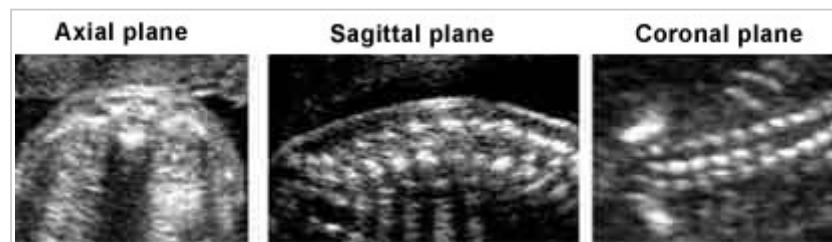


## Neck

Measurement of nuchal fold thickness.

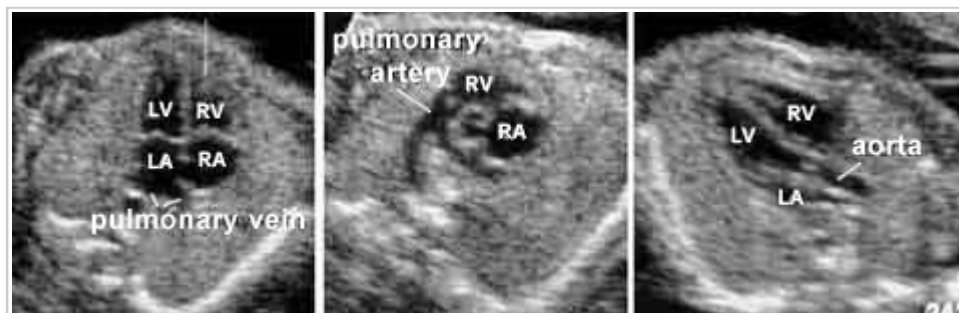
## Spine

Examination both longitudinally and transversely.



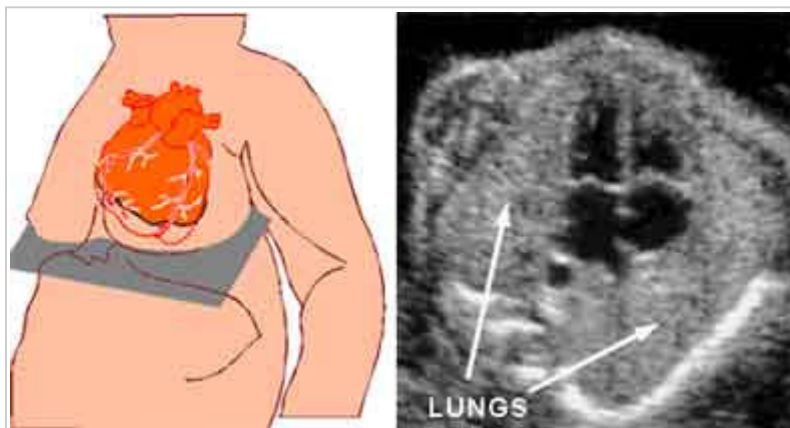
## Heart

Examination of rate and rhythm, four-chamber view, and outflow tracts.



## **Thorax**

Examination of the shape of the thorax, the lungs and diaphragm.



## **Abdomen**

Examination of the stomach, liver, kidneys, bladder, abdominal wall and umbilicus, and measurement of abdominal circumference.



## **Limbs**

Examination of the femur, tibia and fibula, humerus, radius and ulna, hands and feet (including shape and echogenicity of long bones and movement of joints), and measurement of femur length.

